



14mm PUSH-TO-CONNECT

| *Solid Metal Piping Systems*

| *14mm (1/2") Range*

Compressed Air // Vacuum // Inert Gas

TruLink 14mm

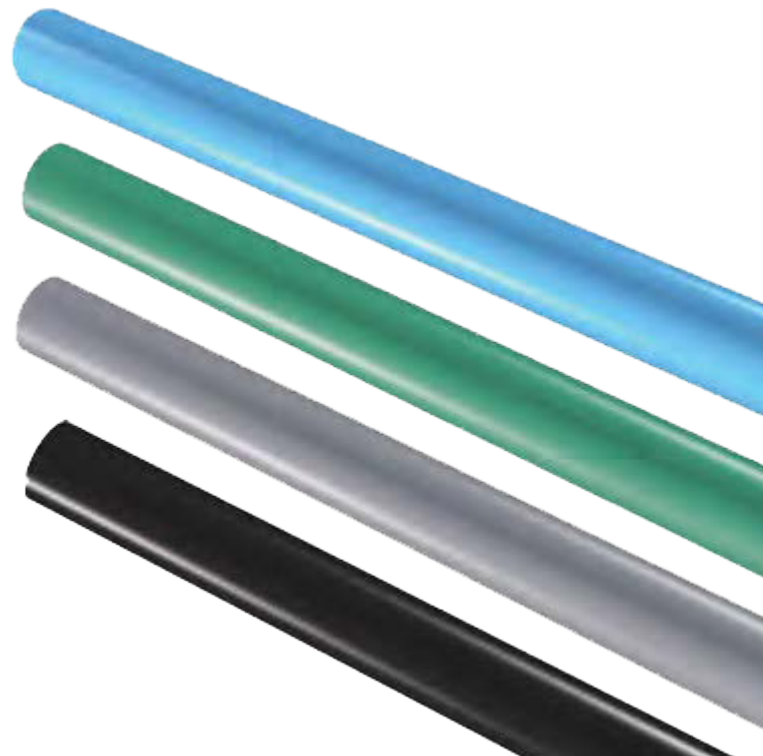
TruLink 14mm is designed to meet the needs of a wide range of industries, from home garage setups to high-tech machine builders and conveyor manufacturers. Crafted from lightweight, **marine-grade aluminum**, the tubing is completely corrosion-resistant and paired with solid brass, nickel-plated fittings for unmatched durability. Together, these components create a high-quality system that installs in seconds. With just a tube cutter and deburring tool, even the most intricate layouts can be assembled in a fraction of the time required for traditional piping systems.

- **Instant Push-to-Connect Design**
- **Guaranteed Leak-Free**
- **Strong/Durable Metal System**
- **Non-Corrosive Components**
- **Simple & Fast Installation**
- **Unique Flexibility**

Tubing Specifications

16ft Pipe		
Frame Color	Description	Part Number
Blue	14mm - Tubing Blue - 16 ft Length	TP1-14-BLUE
Green	14mm - Tubing Green - 16 ft Length	TP1-14-GREEN
Grey	14mm - Tubing Grey - 16 ft Length	TP1-14-GREY
Black	14mm - Tubing Black - 16 ft Length	TP1-14-BLACK

All Tubing is Made with Marine-Grade Aluminum.



TruLink 14mm Parts



Straight Male Adapter	
Straight Male Adapter 14 mm x 3/8" MNPT	TP3-14-06M
Straight Male Adapter 14mm x 1/2" MNPT	TP3-14-08M



Straight Union Connector	
Straight Union Connector 14mm	TP2-14



Union Elbow	
Union Elbow 14mm	TP6-14



90° Swivel Elbow	
Swivel Elbow 14mm 3/8" NPT MNPT	TP6-14-06M



Equal Tee	
Equal Tee 14mm	TP9-14



Swivel Tee	
Swivel Tee 14mm 3/8" NPT MNPT	TP9-14-06M
Swivel Tee 14mm 3/8" NPT MNPT	TP9-14-06M



Plastic Plug	
Plug, Plastic 14mm	TP20-14
(Inserts into TruLink 14mm fittings to plug line)	



Stem Adapter	
Stem Adapter 14mm stem to 1/4" tube	TP22-14-04
Stem Adapter 14mm stem to 3/8" tube	TP22-14-06



Manifold	
1 Port MAN-08F 1/2" Inlet and Base: 1 x 1/2" Outlets	TPMFD-1-08F
2 Port MAN-08F 1/2" Inlet and Base: 2 x 1/2" Outlets	TPMFD-2-08F
4 Port MAN-08F 1/2" Inlet and Base: 4 x 1/2" Outlets	TPMFD-4-08F



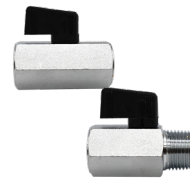
Manifold Plug	
Plug, 1/2" NPT	PA-MFD-HEX PLUG



Ball Valves (Tube Connection)	
Ball Valve Tube-to-Tube, 14mm	TP25-14



Ball Valves (Lockable)	
Ball Valve Lockable 1/2" FNPT	TP26-08F



Ball Valves (NPT)	
1/2" FxF Ball Valve	TPFF-08-08
1/2" MxF Ball Valve	TPMF-08-08



Brackets	
Bracket, Hanging/ Strut 14mm / Pack 10	TP-810-14-PK10W
Hanging/Strut tapped for 1/4" rod and fits Standard Strut.	



Wall Spacer	
Spacer Kit, 3" L x 1" W, 1/2" Thick, 1/4 - 20 Center	TP-SPACER-PK10



Wire Hanger	
1/4" Thread (Pack 10 - 15 ft Length) Use w/ Bracket, Strut	TP-831-04-PK10



Tube Cutter Tool	
Tube Cutter 20mm - 63mm	TP-TUBE CUTTER

TruLink 14mm Accessories



Quick Coupler Industrial Socket Male NPT	
1/4" MNPT	TP-91-04M
3/8" MNPT	TP-91-06M
1/2" MNPT	TP-91-08M



Quick Coupler Industrial Socket Female NPT	
1/4" FNPT	TP-92-04F
3/8" FNPT	TP-92-06F
1/2" FNPT	TP-92-08F



Quick Coupler Industrial Socket Hose Barb	
1/4" Hose Barb	TP-93-04HB
3/8" Hose Barb	TP-93-06HB
1/2" Hose Barb	TP-93-08HB



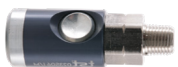
Coupler Plug Industrial Male NPT	
1/4" MNPT	TP-94-04M
3/8" MNPT	TP-94-06M
1/2" MNPT	TP-94-08M



Coupler Plug Industrial Female NPT	
1/4" FNPT	TP-95-04F
3/8" FNPT	TP-95-06F
1/2" FNPT	TP-95-08F



Coupler Plug Industrial Hose Barb	
1/4" Hose Barb	TP-96-04HB
3/8" Hose Barb	TP-96-06HB
1/2" Hose Barb	TP-96-08HB



Safety Coupler Industrial Socket Male NPT	
1/4" Body, 1/2" MNPT	TP-97-08M
1/4" Body, 1/2" FNPT	TP-97-08F



Electronic Timer Drain (IDV Unit)	
1/4" NPT W/ Strainer	TP-900-04
1/2" NPT W/ Strainer	TP-900-08



Water Remover	
1/2" Water Remover/ Valve	TP-IVWR-50
<i>Flow Rate: 53 CFM</i>	
1/2" Water Remover Bracket	TP-BA-3
<i>Unit supplied without bracket</i>	



Optiflo System Flow Controller	
Black Chassis, 75cfm, 1/2" NPT Left to Right Flow	TP-75-BLK-LR
Black Chassis, 75cfm, 1/2" NPT Right to Left Flow	TP-75-BLK-RL
Green Chassis, 75cfm, 1/2" NPT Left to Right Flow	TP-75-GRN-LR
Green Chassis, 75cfm, 1/2" NPT Right to Left Flow	TP-75-GRN-RL
Blue Chassis, 75cfm, 1/2" NPT Left to Right Flow	TP-75-BLU-LR
Blue Chassis, 75cfm, 1/2" NPT Right to Left Flow	TP-75-BLU-RL

Optiflo is an easy tool to dial back your downstream pressure while maintaining full flow capability. Every 10 psi in downstream pressure reduction, in conjunction with suitable storage will gain you 7% in energy savings. Dial back your 15hp by 70 psi and save \$1,617 per year while also enhancing compressor life and reducing maintenance costs.



**EXCLUSIVE
LIFETIME
WARRANTY**

Applied System Technologies is proud to offer our Lifetime Warranty program, covering all pipe and fittings for both the TruLink and Elevation compressed air product lines. This warranty is possible due to our long history of producing high quality products, continuing our tradition of excellence and customer satisfaction. We are 100% committed to supplying the finest products available to our customers and always doing our best to exceed their expectations. This Lifetime Warranty is a testament to that commitment.

Nothing contained on these pages is intended to extend any warranty or representation, expressed or implied, regarding the product described herein. Any such warranties or other terms and conditions of sale of products shall be in accordance with Applied System Technologies standard terms and conditions for such products, which are available upon request. Product improvement is a continuing goal at Applied System Technologies. Designs and specifications are subject to change without notice or obligation.



3915 Shopton Rd. Suite 104,
Charlotte, NC 28217
(704) 947-6966
customerservice@appliedsystemtech.com