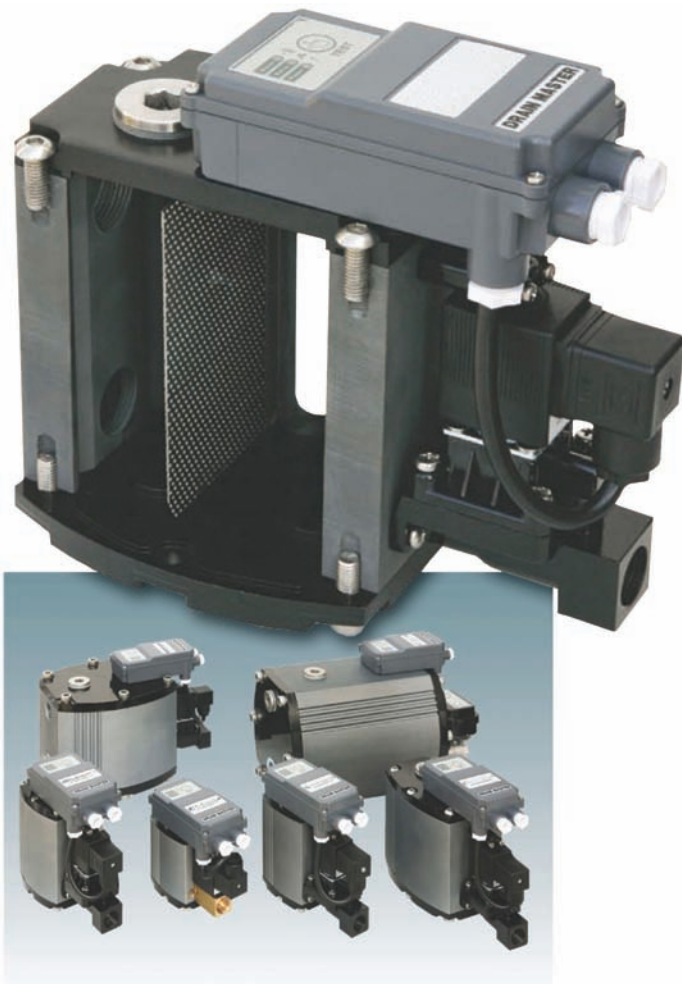


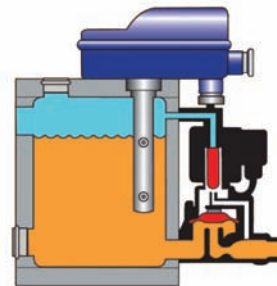
POWERMIZER ZERO LOSS DRAIN VALVES



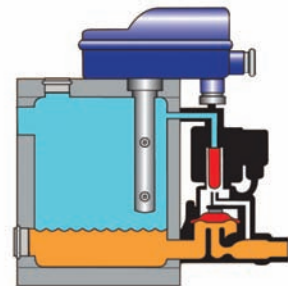
The ZLD range of zero loss drains provides the most cost effective way of draining moisture from your compressed air system. ZLD drains are the only valve in its class that has a built in particulate strainer to prevent the discharge valve from ever getting blocked from particle contamination. High quality state of the art electronics allow for local and remote monitoring of drain functionality.

- Dependable condensate removal
- Maintenance free level sensors
- Stainless steel internal strainer
- State of art electronics with local and remote monitoring capabilities
- Intelligent fail safe operating functionality
- Compact design for easy installation

PRINCIPLES OF OPERATION



A. When the condensate level reaches the high level, sensor the solenoid valve is activated and the condensate discharged.



B. As the level of condensate reduces, it reaches the low level sensor, which signals the valve to close - no air is lost.



Normal Mode



Alarm Mode

POWER VOLTAGE

90-260 Vac (50-60Hz)

MAXIMUM POWER INPUT

< 2.0VA

CABLE CROSS SECTION & FUSE

5.8-6.5 mm, .075mm, 0.5A

CONTACT LOADING RELAY OR OUT

<260Vac - <0.5A



INFINITY



applied system technologies™

POWERMIZER ZERO LOSS DRAIN VALVES TECHNICAL DATA

	MODEL					
	ZLD-200	ZLD-500	ZLD-2000	ZLD-5000	ZLD-18000	ZLD-53000
Compressor Capacity (CFM)	200	500	2000	5000	18000	53000
Dryer Capacity (CFM)	350	1000	3500	10500	35000	106000
Filter Capacity (CFM)	1700	5000	17500	53000		
Operating Pressure (PSI)	12 - 232	12 - 232	12 - 232	12 - 232	12 - 232	12 - 232
Voltage (AC/V)	110, 220	110, 220	110, 220	110, 220	110, 220	110, 220
Application	Oil Injected, Oil Free	Oil Injected, Oil Free	Oil Injected, Oil Free	Oil Injected, Oil Free	Oil Injected, Oil Free	Oil Injected, Oil Free
Temperature (Min/Max, Degrees)	33 - 176	33 - 176	33 - 176	33 - 176	33 - 176	33 - 176
Inlet Size (QTY)	1/2" (1)	1/2" (2)	1/2" (2)	3/4" (3)	3/4" (3)	3/4" (4), 1" (1)
Outlet (Inch)	1 x 1/2"	1 x 1/2"	1 x 1/2"	1 x 1/2"	1 x 1/2"	1 x 1/2"
Weight (lb)	2.4	3.2	4.6	5.3	9.0	14.3

POWERMIZER INFINITY DRAIN VALVE



Condensate poses a serious threat to compressed air systems. Failure to carryout regular draining will result in serious equipment damage and costly system disruption. The IDV guarantees regular uninterrupted condensate drainage from your compressed air systems. It is the most economical product available for prevention of liquid contamination.

VALVE DATA

CONNECTION INLET	1/2" npt male
CONNECTION OUTLET	1/4" / 1/2" npt female
OPERATING PRESSURE 16 BAR	235 psig
BODY MATERIAL	Brass
SEAL MATERIAL	Viton
INTERNAL COMPONENTS	Stainless steel
MEDIA TYPE	Air/oil/water
VOLTAGE	100-120V Frequency (Hz) 50-60Hz

TIMER DATA

TIMING SCALE	On time: Adjustable 0.5-10 seconds Off time: Adjustable 0.5-45 minutes
SUPPLY VOLTAGE	24-240V AC/DC 50/60Hz
CURRENT CONSUMPTION	4mA Max
SWITCH CAPACITY	1 Amp
INRUSH CURRENT	10Amps for 10 mSec
OPERATING TEMPERATURE	14°F - 122°F
DUTY CYCLE	100% ED
ENVIROMENTAL PROTECTION	IP65, Nema IV
INDICATORS	LED to indicate Phases
MANUAL OVERRIDE	Test Switch
CONNECTION	Input (power supply) DIN 43650 Form A Output power (To valve): DIN43650 Form A

FILTER BALL VALVE DATA

INLET SIZE	1/2" npt male
MATERIAL	Body-Brass, Handle - ABS, Strainer-Stainless Steel

Approvals: CE, CSA, cULus

PART NUMBER	DESCRIPTION
90900-04	1/4" npt w/Strainer
90900-08	1/2" npt w/Strainer